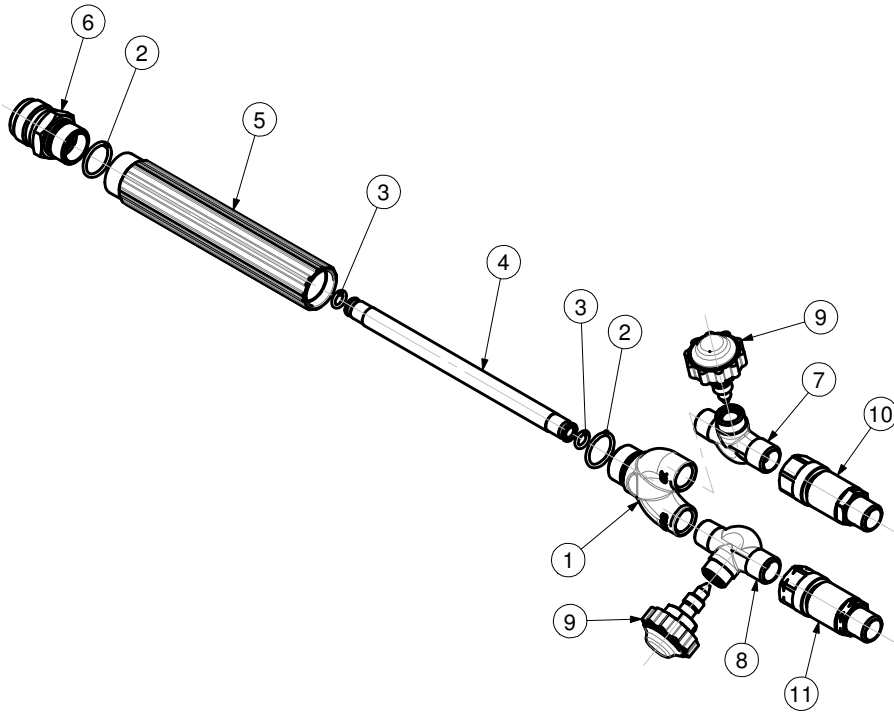




TORCH HANDLE
-MODEL VH31



ITEM	PART No.	Qty	DESCRIPTION	ITEM	PART No.	Qty	DESCRIPTION
1	VH3188	1	Tail	7	5210CR	1	Valve body
2	215X7116B	2	O-ring	8	5210CL	1	Valve body
3	215X7110A	2	O-ring	9	VAVH31	2	Valve
4	4392	1	Tube	10	B188SHTR	1	Flashback arrestor
5	VH3143PS	1	Handle	11	B188SHTL	1	Flashback arrestor
6	9005202	1	Block				

SERVICE NOTES

ITEM No.	TORQUE SPECIFICATION	SERVICE TOOL OR NOTES
1		56T8 - 3/4"-27-UNS-3A-RH - Die for tail handle threads
2 - 3		Use Molykote M-55
5	56-63 Nm	42T1 - Special handle wrench
6		62T2A - 7/8"-20-UNEF-2A-RH - Die for mixer threads TI7244HV - To reseal conical seat
7		13mm open end wrench - Use LOCTITE 270 RT14288 - To reseal needle valve seat 13T2 - 3/8"-24-UNF-3B - Tap for needle valve threads 62T9 - 9/16"-27-UNS-3A - Die for needle valve threads 52T3R - 9/16"-18-UNF-3A-RH - Die oxygen hose threads 52T2R - To reseal oxygen hose connection
8		13mm open end wrench - Use LOCTITE 270 RT14288 - To reseal needle valve seat 13T2 - 3/8"-24-UNF-3B - Tap for needle valve threads 62T9 - 9/16"-27-UNS-3A - Die for needle valve threads 52T3L - 9/16"-18-UNF-3A-LH - Die fuel hose threads 52T2L - To reseal fuel hose connection
9	12 Nm	17mm open end wrench - Use Molykote M-55
10 - 11	8-12 Nm	11/16" inch hex wrench

IMPORTANT:

All repairs or conversions should be carried out by a qualified repairer, with genuine HARRIS parts, to HARRIS repair specifications, and in accordance with local laws or regulations. No contaminant (grease, oil, others) to come in contact with oxygen.