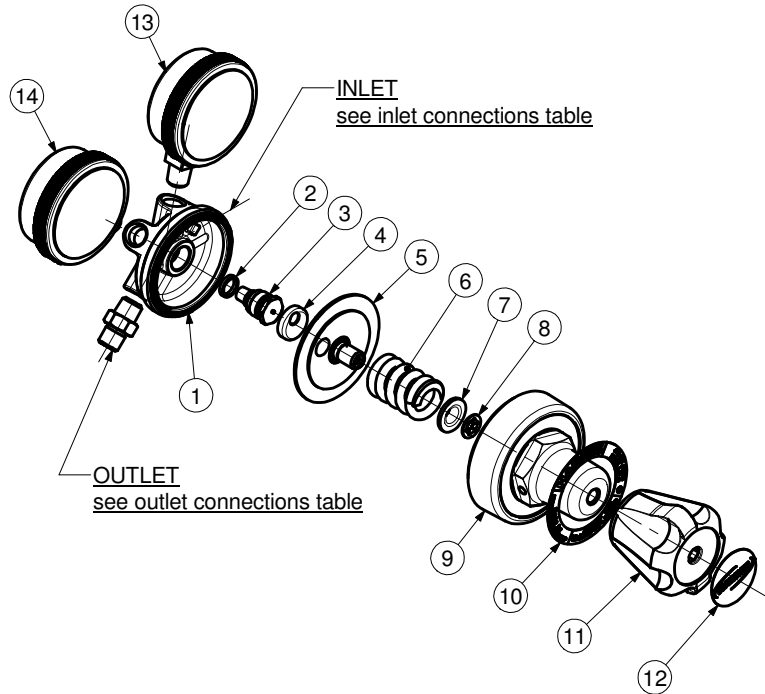




PRESSURE REGULATORS
 -MODEL 25GX-D
 -MODEL 25GX-AD



PART NUMBER / DESCRIPTION				
Item	5	6	13	14
MODEL No.	DIAPHRAGM-Type SRV	SPRING	H.P. GAUGE	L.P. GAUGE
25GX-D4	D8254	2985	8A615	8A661
25GX-D4OX	D8254	2985	8A615OX	8A661OX
25GX-D10	D82510	X92856	8A615	8A619
25GX-D10OX	D82510	X92856	8A615OX	8A619OX
25GX-AD4	D8254A	2985	8A615	8A661
25GX-AD10	D82510A	X92856	8A615	8A619

ITEM	PART No.	Qty	DESCRIPTION	ITEM	PART No.	Qty	DESCRIPTION
1	8251052	1	Body	8	101597BB	1	Retaining ring
2	89539	1	Gasket	9	82511	1	Bonnet
3	9100845	1	Valve	10	According to country	1	Nameplate
4	9005122	1	Disc	11	G2528	1	Knob
5	See Table	1	Diaphragm-type SRV	12	According to country	1	Knob label
6	See Table	1	Spring	13	See Table	1	H.P. Gauge
7	10164	1	Pivot	14	See Table	1	L.P. Gauge

SERVICE NOTES		
ITEM No.	TORQUE SPECIFICATION	SERVICE TOOL OR NOTES
Assembly Complete		25T1C - Holding fixture-secure in vice and locate assembly in fixture
3	25 - 35 Nm	16mm hex socket wrench
9	48 - 70 Nm	1" 5/8 inch hex wrench
11		Lube with Fomblin RT 15 or Krytox GPL 226 Grease
13 - 14	20 - 22 Nm	14mm open end wrench - Use PTFE tape
Outlet	35 - 60 Nm	Wrench hex varies - Use LOCTITE 270
Inlet	35 - 60 Nm	Wrench hex varies - Use LOCTITE 270

IMPORTANT: All repairs or conversions should be carried out by a qualified repairer, with genuine HARRIS parts, to HARRIS repair specifications, and in accordance with local laws or regulations. No contaminant (grease, oil, others) to come in contact with oxygen.