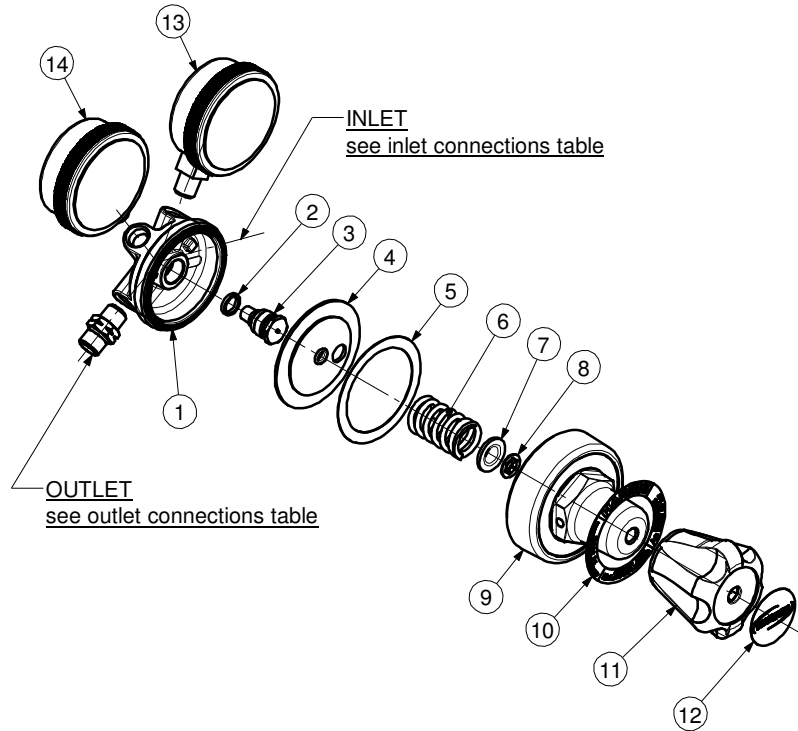




**PRESSURE REGULATORS
-MODEL 25GX**



ITEM	PART No.	Qty	DESCRIPTION	ITEM	PART No.	Qty	DESCRIPTION
1	8251052	1	Body	8	101597BB	1	Retaining ring
2	89539	1	Gasket	9	82511	1	Bonnet
3	9100845	1	Valve	10	According to country	1	Nameplate
4	See Table	1	Diaphragm assy.	11	G2528	1	Knob
5	See Table	1	Slip ring	12	According to country	1	Knob label
6	See Table	1	Spring	13	See Table	1	H.P. Gauge
7	10164	1	Pivot	14	See Table	1	L.P. Gauge

Item	PART NUMBER / DESCRIPTION				
	4	5	6	13	14
MODEL No.	DIAPHRAGM	SLIP RING	SPRING	H.P. GAUGE	L.P. GAUGE
25GX-1,5AC	9100146	2571	40859	8A617AC	8A686AC
25GX-1,5LP	9100146	2571	44854	8A617	8A686
25GX-4LP	9100146	2571	2985	8A617	8A661
25GX-4OX	9100146	2571	2985	8A615OX	8A661OX
25GX-4	9100146	2571	2985	8A615	8A661
25GX-10OX	9100803		X92856	8A615OX	8A619OX
25GX-10	9100803		X92856	8A615	8A619

SERVICE NOTES		
ITEM No.	TORQUE SPECIFICATION	SERVICE TOOL OR NOTES
Assembly Complete		25T1C - Holding fixture-secure in vice and locate assembly in fixture
3	25 - 35 Nm	16mm hex socket wrench
9	48 - 70 Nm	1" 5/8 inch hex wrench
11		Lube with Fomblin RT 15 or Krytox GPL 226 Grease
13 - 14	20 - 22 Nm	14mm open end wrench - Use PTFE tape
Outlet	35 - 60 Nm	Wrench hex varies - Use LOCTITE 270
Inlet	35 - 60 Nm	Wrench hex varies - Use LOCTITE 270

IMPORTANT: All repairs or conversions should be carried out by a qualified repairer, with genuine HARRIS parts, to HARRIS repair specifications, and in accordance with local laws or regulations. No contaminant (grease, oil, others) to come in contact with oxygen.