

Fine-Tuned Performance for Pipe & Vessel

STT® – Better Than Ever.

Our patented STT® (Surface Tension Transfer®) process was the original open-root MIG (modified short-circuit) solution to hit the market. After decades of leading the industry, we've taken the performance of this iconic process to the next level – making it better than ever.

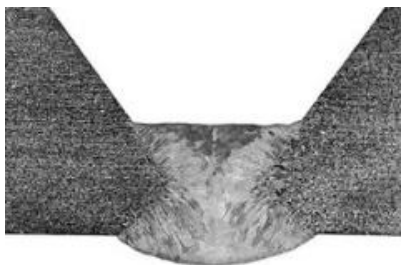
- Breakthrough travel speeds
- Industry-leading arc stability
- No sense lead

Processes Optimized For Your Needs

The PIPEFAB™ system comes fully loaded with weld modes optimized specifically for pipe and vessel fabrication. All processes - Stick, MIG, TIG and FCAW - have been fine-tuned for maximum performance with the industry's common, filler metal, wire diameters and gas mixtures.

- Stick modes optimized for cellulosic and low hydrogen electrodes
- MIG modes optimized for 0.035 in. & 0.045 in. steel, stainless steel and metal-cored
- MIG modes optimized for simplicity (Smart Pulse™) and fume management (Low Fume Pulse™)
- Flux-cored modes optimized for 0.045 in., 0.052 in., 1/16 in.

STT Root



PIPEFAB™



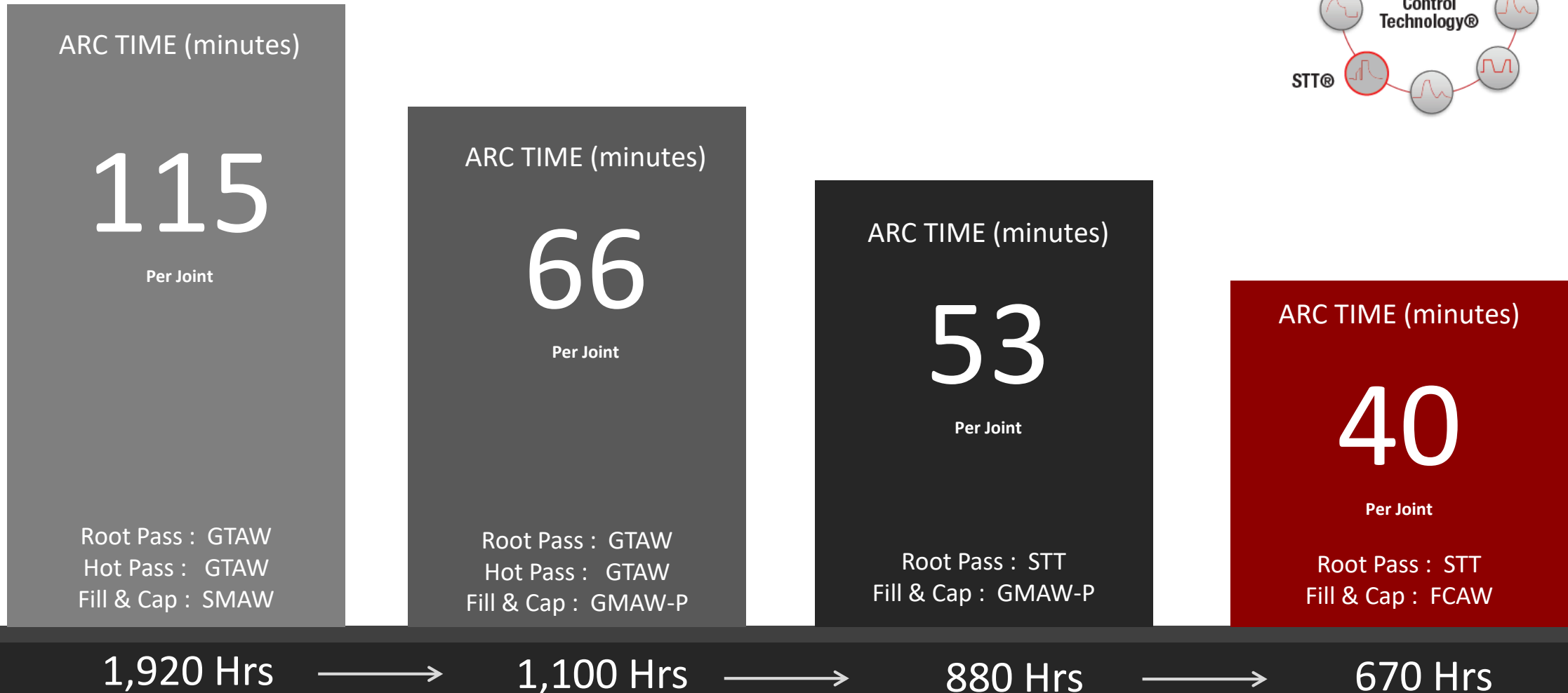
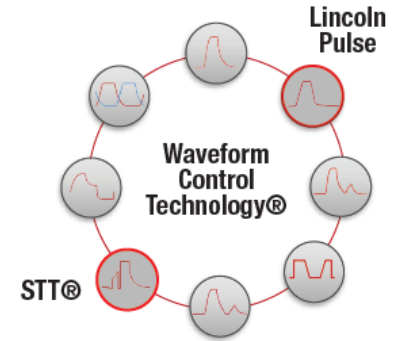
Process Piping
INCREASE SPEED & PRODUCTIVITY

UP TO 65%



DECREASE WELDING TIMES = MORE JOINTS PER DAY

- » Increased Production Output
- » Faster Completion Times
- » Significant Cost Reduction
- » Reduced Cycle Times



Hours Saved – 1,250 Hours

*Welding Time Study :
ARC TIME to weld 1000 joints, 273mm Diameter x 15.9mm thick on carbon steel pipe. Based on a 10 hour day . All welds completed in the 5G fixed welding position.