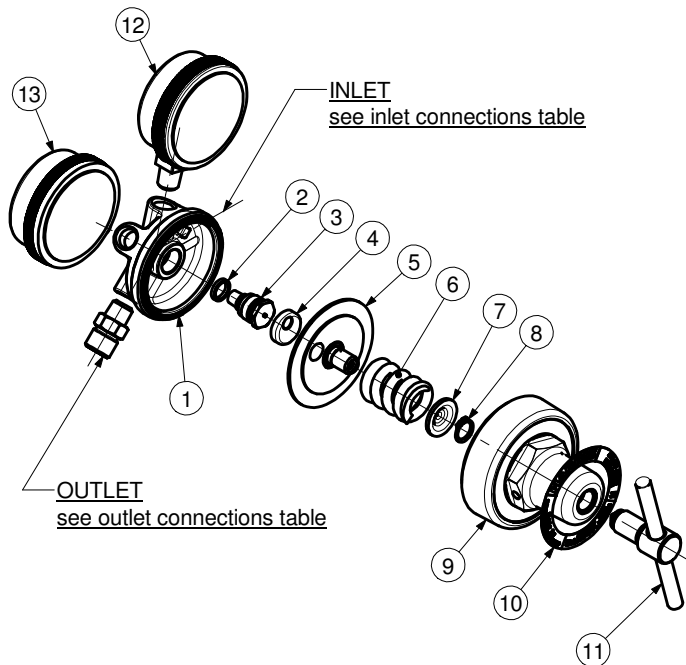




PRESSURE REGULATORS
 -MODEL 25GX-D15
 -MODEL 25GX-AD15

PART NUMBER / DESCRIPTION			
Item	5	12	13
MODEL No.	DIAPHRAGM-Type SRV	H.P. GAUGE	L.P. GAUGE
25GX-D15	D82515	8A615	8A6411
25GX-D15OX	D82515	8A615OX	8A6411OX
25GX-AD15	D82515A	8A615	8A6411



ITEM	PART No.	Qty	DESCRIPTION	ITEM	PART No.	Qty	DESCRIPTION
1	8251052	1	Body	8	825X71	1	Retaining ring
2	89539	1	Gasket	9	J25A	1	Bonnet
3	9100845	1	Valve	10	According to country	1	Nameplate
4	9005122	1	Disc	11	C825	1	Screw
5	See Table	1	Diaphragm-type SRV	12	See Table	1	H.P. Gauge
6	9485	1	Spring	13	See Table	1	L.P. Gauge
7	5664A	1	Pivot				

SERVICE NOTES		
ITEM No.	TORQUE SPECIFICATION	SERVICE TOOL OR NOTES
Assembly Complete		25T1C - Holding fixture-secure in vice and locate assembly in fixture
3	25 - 35 Nm	16mm hex socket wrench
9	48 - 70 Nm	1" 5/8 inch hex wrench
11		Lube with Fomblin RT 15 or Krytox GPL 226 Grease
12 - 13	20 - 22 Nm	14mm open end wrench - Use PTFE tape
Outlet	35 - 60 Nm	Wrench hex varies - Use LOCTITE 270
Inlet	35 - 60 Nm	Wrench hex varies - Use LOCTITE 270
IMPORTANT:	All repairs or conversions should be carried out by a qualified repairer, with genuine HARRIS parts, to HARRIS repair specifications, and in accordance with local laws or regulations. No contaminant (grease, oil, others) to come in contact with oxygen.	