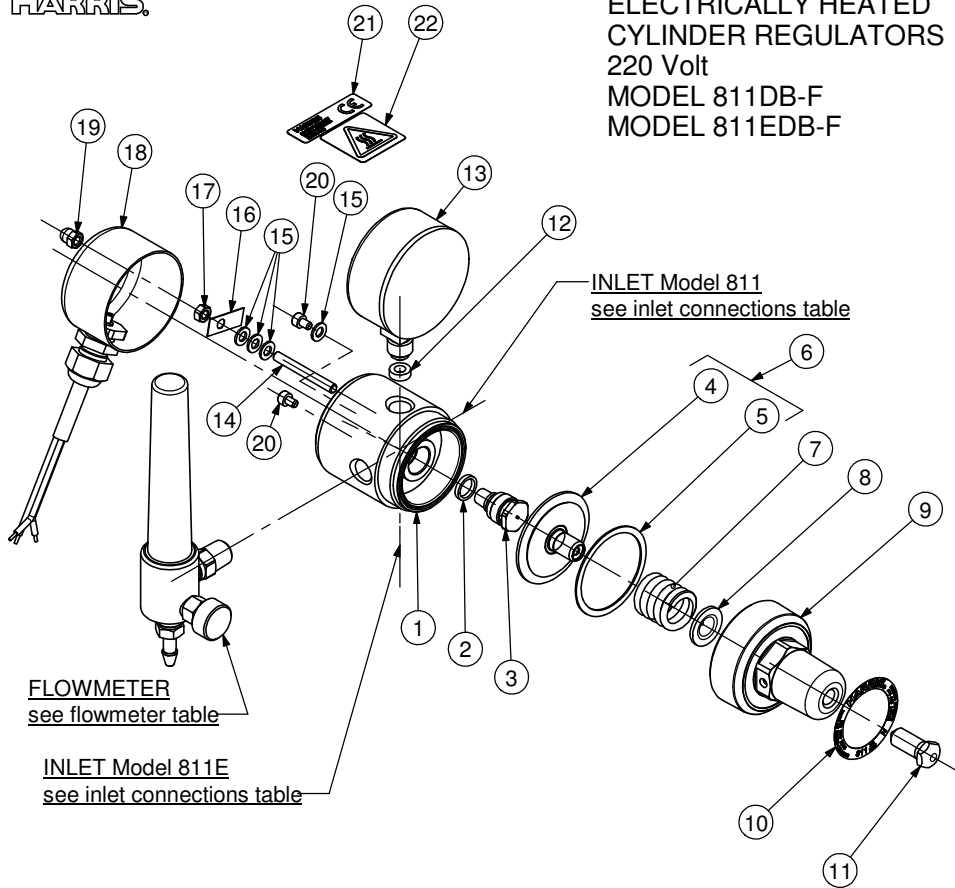


HARRIS.

ELECTRICALLY HEATED
CYLINDER REGULATORS
220 Volt
MODEL 811DB-F
MODEL 811EDB-F



| ITEM | PART.No. | Qty | DESCRIPTION | ITEM | PART.No. | Qty | DESCRIPTION |
|------|----------------------|-----|--------------------|------|------------|-----|-------------|
| 1 | See Table | 1 | Body | 12 | 84139A | 1 | Gasket |
| 2 | 89539 | 1 | Gasket | 13 | 8E615BP | 1 | H.P. Gauge |
| 3 | 9100843 | 1 | Valve | 14 | 81177 | 1 | Screw |
| 4 | D8014 | 1 | Diaphragm-Type SRV | 15 | 81196 | 4 | Washer |
| 5 | 80171 | 1 | Slip Ring | 16 | 81113 | 1 | Plate |
| 6 | D8014PS | 1 | Diaphragm-Type SRV | 17 | 811592 | 1 | Nut |
| 7 | 801852 | 1 | Spring | 18 | E81129 | 1 | Cover |
| 8 | 10164 | 1 | Pivot | 19 | 81159 | 1 | Nut |
| 9 | 801114 | 1 | Bonnet | 20 | 811772 | 2 | Screw |
| 10 | According To Country | 1 | Nameplate | 21 | 81165N220V | 1 | Label |
| 11 | 801776 | 1 | Adjust Screw | 22 | 81165Y1 | 1 | Label |

PART NUMBER/DESCRIPTION

| Item | 1 |
|-----------|--------|
| MODEL No. | BODY |
| 811DB15F | 811103 |
| 811DB30F | 811103 |
| 811EDB15F | 811104 |
| 811EDB30F | 811104 |

SERVICE NOTES

| ITEM No. | TORQUE SPECIFICATION | SERVICE TOOL OR NOTES |
|-----------|----------------------|--|
| 3 | 250-300 kgcm | 16mm Hex Socket Wrench |
| 9 | 480-550 kgcm | 30mm Hex Wrench |
| 11 | | 13mm Hex Socket Wrench |
| 13 | 300-330 kgcm | 14mm Open End Wrench |
| 17 | 8-10 kgcm | 8mm Open End Wrench |
| 19 | 6-8 kgcm | 8mm Open End Wrench |
| 20 | 8-10 kgcm | 3mm Allen Hex Wrench |
| FLOWMETER | 360-400 kgcm | 14mm Open End Wrench - Use P.T.F.E. Tape |
| INLET | 490-540 kgcm | Wrench Hex Varies - Dry Joint |

IMPORTANT: All repairs or conversions should be carried out by a qualified repairer, with genuine HARRIS parts, to HARRIS repair specifications, and in accordance with local laws or regulations. No contaminant (grease, oil, others) to come in contact with oxygen.